





NOTES ON DRAINAGE:

1. Access chambers are to be provided at junctions and change in direction of pipeline/channels.
2. Access chambers are to be provided for drainage pipe lengths every 10m.
3. For additional information refer to the data listed in the following table for different types of components and for the access/inspection chambers/silt traps.
4. All pipes from floor drains discharging into pits are to be 150mm laid at a minimum inclination of 1:150.

## SURFACE WATER DISCHARGE ELEMENTS

[illegible]

## SURFACE WATER DISCHARGE ELEMENTS

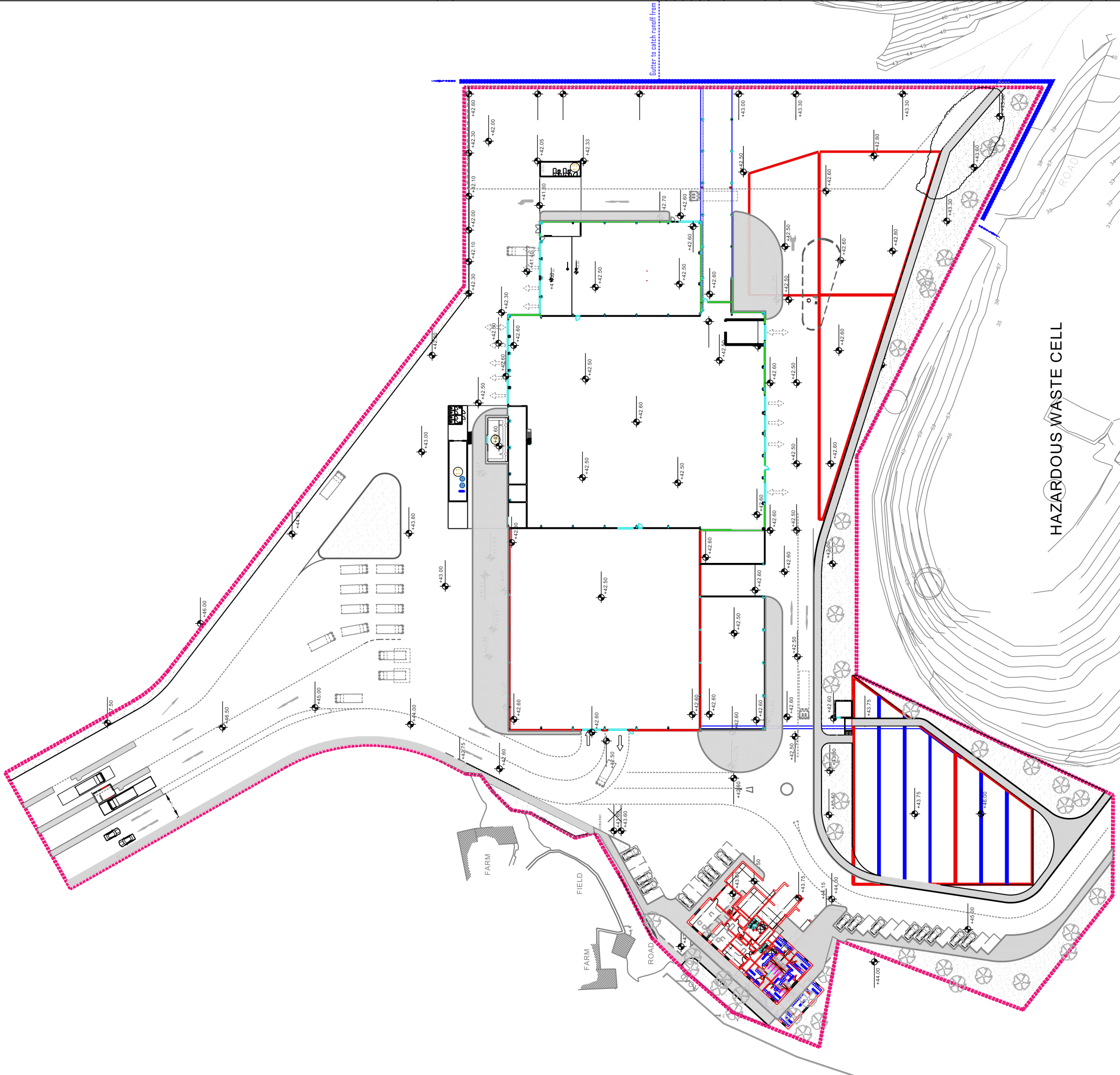
[illegible]

## ACCESS/INSPECTION CHAMBERS/SILT TRAPS

REF	INVENT CONNECTING ELEMENT	INVENT CONNECTING ELEMENT	INTERNAL SIZE	INTERNAL Diameter
B	MB BR	42.22 42.22	42.12	600
S	S <sup>50</sup> S <sup>12</sup>	42.09 42.09	41.99	600
H	H <sup>60</sup> H <sup>60</sup>	42.46 42.46	42.36	600
C	C <sup>32</sup> C <sup>32</sup>	42.03 42.03	41.93	1200
J	J <sup>12</sup> J <sup>12</sup>	42.10 42.10	41.96	1000
D	D <sup>10</sup> D <sup>10</sup>	41.91 41.91	41.73	1400
Y	Y <sup>17</sup> Y <sup>17</sup>	41.83 41.83	41.67	900
E	E <sup>17</sup> E <sup>17</sup>	41.87 41.87	41.77	1800
V	V <sup>10</sup> V <sup>10</sup>	41.90 41.90	40.00	1200

in-kind pending MFPA approval

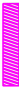

This drafting document is copyright protected. Any utilization, especially reproduction by any means or storage and processing by electronic means requires our written permission. Without such permission, this document shall not be made available to any third party. Violations will be subject to prosecution.



HAZARDOUS WASTE CELL

### Gutter to catch runoff from

**LEGEND:**

	Surface water inlet - grille
	Surface water inlet - through perforations in slabs

This drawing needs to be read in conjunction with the following drawings:

- VBL-GE-CIV-TOT-DWG-0001
- VBL-MT-CIV-TOT-DWG-0001
- VBL-MT-CIV-TOT-DWG-0003
- VBL-MT-CIV-TOT-DWG-0007
- VBL-MT-CIV-STP-DWG-00039

DESIGNATION:		Approved	Changed	#
Flow	Description	Date		
F				
G				
H	Repositioning of Cutters, Adjustments to Falls, Upgrading of Layout	2/25/74		12/48
I	Repositioning of Cutters, Overhaul tracks and placement near reserve	9/4/74		14

ARCHITECT:	STRUCTURAL ENGINEER:
<div style="border: 1px solid black; height: 100px; width: 100%;"></div>	
OCCUPATION:	

PROJECT:	

WORKS TENDER FOR THE DESIGN, BUILD (DEVELOP AND CONSTRUCT) AND OPERATE OF A MECHANICAL AND BIOLOGICAL WASTE TREATMENT PLANT AT THE NORTH OF MALTA

**CONSORTIUM:**

[illegible]

Drawn	EG	13th June 2014
Chartered	PF	13th June 2014
Approved	PF	13th June 2014

Scale	1:500	AI
DRAWING TITLE:		
DRAWING NO.:		
MTP Surface Water Drainage		
VPI-MT-CN-TOT-DWG-00002		

[illegible]